

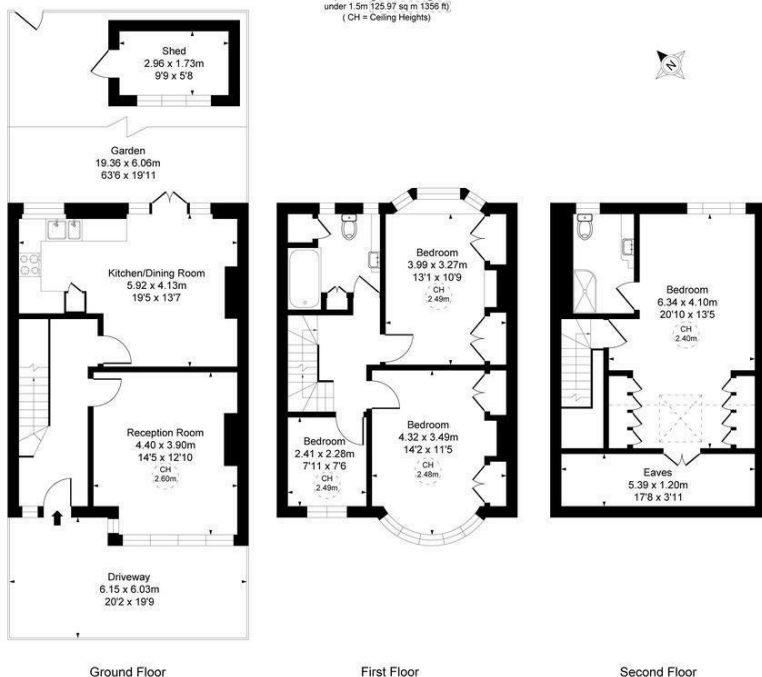
**Marina Avenue
Motspur Park, KT3 6NE**

Offers In Excess Of £750,000 Freehold



This fantastic 1495 sqft FOUR DOUBLE BEDROOM, TWO BATHROOM 1930's Mid-Terrace house has an open plan kitchen/dining room, off street parking to the front and a superb 63'6 ft garden. Located on one of Motspur Park's most desirable roads, only 0.1 Miles to the Station, Shops and the open space of The Sir Joseph Hood Memorial Playing Fields. Neutrally decorated throughout, allowing an incoming purchaser to move in and over time finish and extend S.T.P.P to their own desired tastes. No Onward Chain.

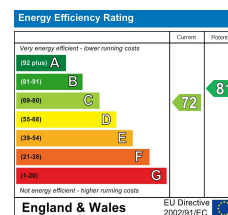
Marina Avenue, Motspur Park, KT3
 Approximate Gross Internal Area
 138.87 sq m / 1495 sq ft
 (Excluding restricted height
 under 1.5m/5.97 sq m/1366 sq ft)
 (CH = Ceiling Heights)



This plan is not to scale. It is for guidance and not for situation purposes.
 All measurements and areas are approximate only, and have been prepared in accordance with the current edition of the RICS Code of Measuring Practice.



- 1495 sqft - Four Double Bedroom - Two Bathroom
- 1930's Mid-Terrace House - With Loft Conversion
- Off Street Parking To Front
- 63'6 ft Rear Garden With Potential To Extend S.T.P.P
- One Of Motspur Park's Most Sought After Roads
- 0.1 Miles To Motspur Park Station And Shops
- 0.1 Miles To The Sir Joseph Hood Memorial Playing Fields
- No Onward Chain
- EPC - C
- Council Tax Band - E



For Free Mortgage Quote and Best Mortgage Rates, call Ellisons Mortgage Advisor on 0208 944 9595



Although these particulars are believed to be correct, their accuracy is not guaranteed and they do not form part of any contract.

Celebrating 30 years of successful Sales and Lettings in Merton

